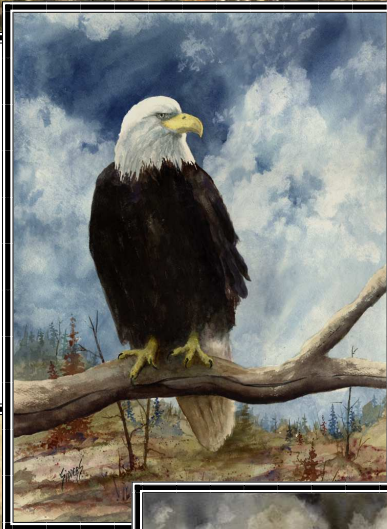
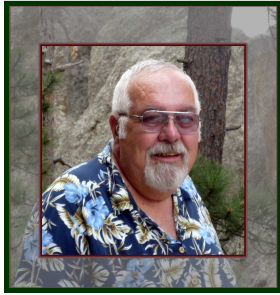


# The Watercolor Paintings of Sam Sidders

## THINGS



Sam Sidders  
54370 S. Co. Rd. 180  
Gage, OK. 73843



## Sam Sidders

Sam's work reflects not only his northwest Oklahoma roots, but also his travels through out the USA and Europe.

While studying art at Southwestern Oklahoma State University he selected three-dimensional art as his area of emphasis, working in sculpture, modeling, ceramics and jewelry design. However, he has come to prefer working two-dimensionally and prefers the use of Pen and Ink for his drawings and Watercolor for his paintings.

The subjects of Sam's art are very diverse. His three children, who are all fans of different styles of his work, tease him about having multiple personalities when it comes to his art. He enjoys painting and drawing landscapes, doing character studies that are usually composite works rather than being representative of a specific individual. He also produces works that have no subject matter. Working instead with only shapes and color. Sam says that this "non-

objective" style is the most difficult yet most rewarding style that he works in. Then there is the "whimsical" side of his art that Sam calls, "Esoteric Flummery" with subjects that ranging from fantasy studies of nonexistent times or places to surrealistic objects or situations that can only be found in his mind.



"American Robin" 120113-WC

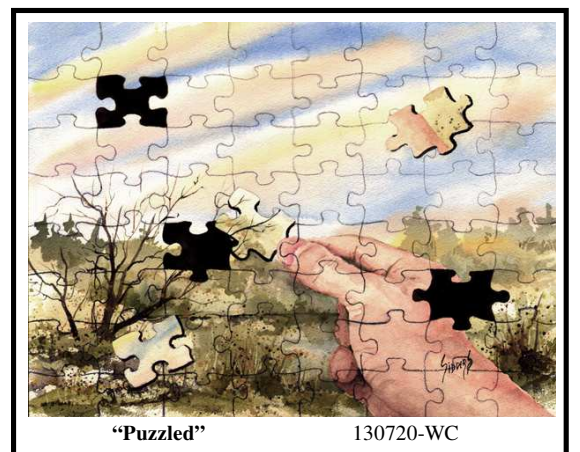


"Festival Artist" 120927-WC

For several years following graduation from college, Sam and his wife Emma owned and operated an art gallery in Oklahoma City. He exhibited his work there and in other area galleries. He also participated in numerous shows and art festivals throughout the Southwest.

In 1978 Sam left the field of art to assume the management responsibilities of a non-art related family business. However, he continued to paint and draw for his own enjoyment and in 1994, at the encouragement of his children, Sam began to devote more time to art. At that time, he added the making of Kaleidoscopes to his artistic endeavors and has since constructed hundreds of them in a variety of different styles.

In 2002 Sam returned to the field of art as his primary occupation. He no longer makes kaleidoscopes, but dedicates most of his time to watercolor painting. He participated in many art festivals each year until 2010 and his work can be found in galleries and shops in Oklahoma, Kansas, Texas and Arkansas. Over the past 50 years, Sam's work has received many awards.



"Puzzled" 130720-WC



**“Pampa Daisies”**

111110-WC



**“Western Bluebird”**

120429-WC



**“Robin’s Nest”**

100209-WC



**“Daisies III”**

110817-WC



**“Reeds”**

041217-WC



**“Curt’s \$64 Question”**

110523-WC-1115



**"Poinsettia"**

121009-WC



**"Yellow Rose"**

060206-WC



**"Yellow Flowers"**

061030-WC



**"Scabious"**

051105-WC



**"Daisies II"**

060725-WC



**"Lazy Daisies"**

061125-WC



**"Another Water Lily"**

060107-WC



**"Poinsettia"** 120930-WC



**"Poinsettia"** 121001-WC



**"Poinsettia"** 121002-WC



**"Poinsettia"** 121003-WC



**"Poinsettia"** 121004-WC



**"Poinsettia"** 121005-WC



**"A White Rose"** 051217-WC



**"A White Rose Too!"** 051223-WC



**"Daisies"** 051028-WC



**"White Chair with Pots"** 090220-WC



**"Water Lily"** 051120-WC



**"Chair"** 080226-WC



**"Thunder"**

071102-WC



**"Fury"**

080917-WC



**"Whistler"**

080920-WC



**"Repairing The Nest"**

071107-



**"Drifter"**

071017-WC



**"Red"**

071015-WC



**"St. Augustine Gull"**

050208-WC



**"Summer Tanager"**

120107-WC



**"American Robin"**

120113-WC



**"Cardinal"**

111117-WC



**"Dustie's Cardinal"**

111128-WC



**"Indigo Bunting"**

111228-WC



**"Western Meadowlark"**

120124-WC



**"Cardinal"**

111121-WC



**"Cardinal"**

111118-WC



**"Franci's Cardinal"**

111119-WC



**"Shelly's Cardinal"**

111127-WC



**"Yellow Tanager"**

111231-WC

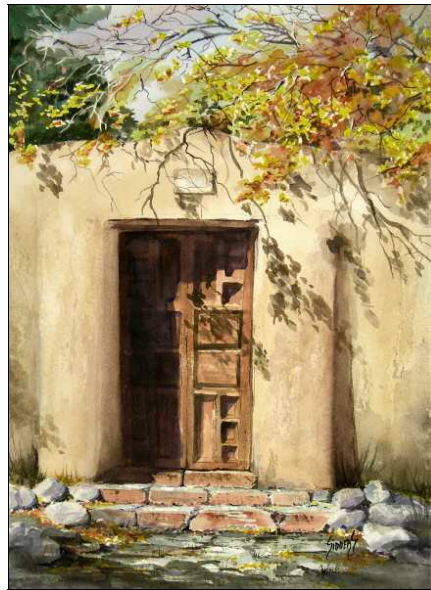


**"Eastern Bluebird"**

111218-WC



**"Stone Steps"** 100809-WC



**"Hacienda Gate"** 060620-WC



**"The Open Door"** 060611-WC



**"Western Bluebird"** 120427-WC



**"Crooked Steps and Purple Doors"**  
051012-WC



**"Tucson Doorway"** 080819-WC



**"House on Delgado Street"** 100815-WC



**"Door With Flowers"** 040630-WC



**"Yellow House"** 060722-WC



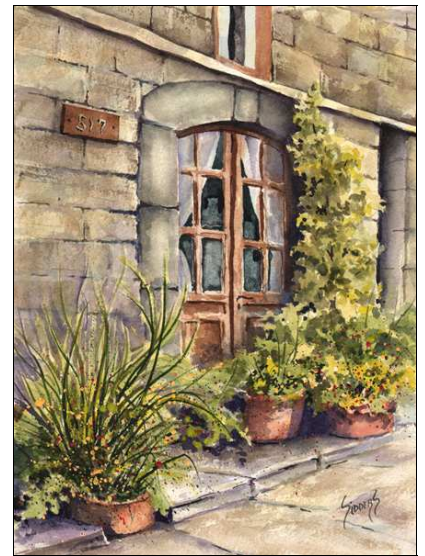
**"Doorway With Pots"** 090313-WC



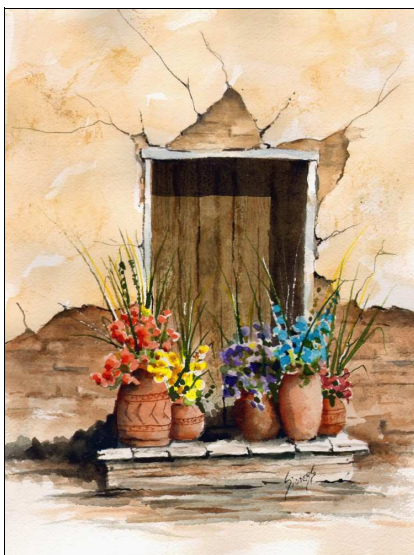
**"Window Box"** 050707-WC



**"Door"** 080818-WC



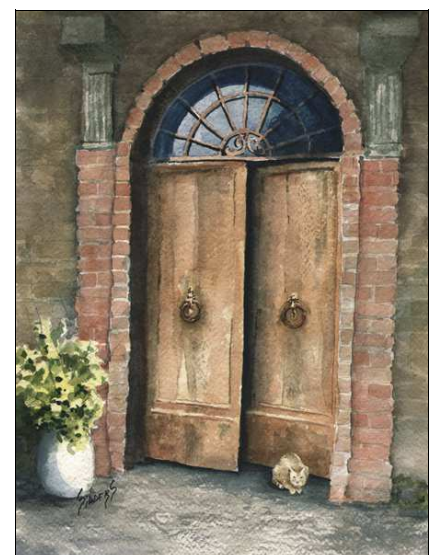
**"517"** 101020-WC



**"Door With 5 Flower Pots"** 100407-WC



**"Stephanie's Porch"** 081101-WC



**"The Sentinel"** 10129-WC



**"Tuscan Door"**

110106-WC



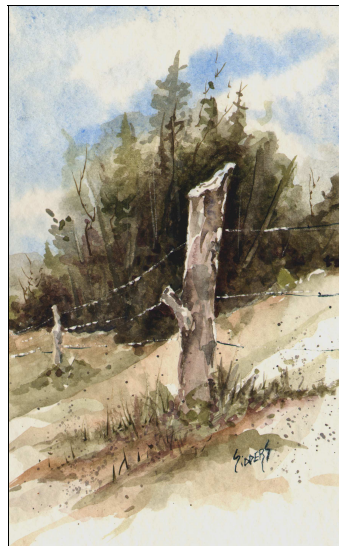
**"Barrel With Flowers"**

080810-WC



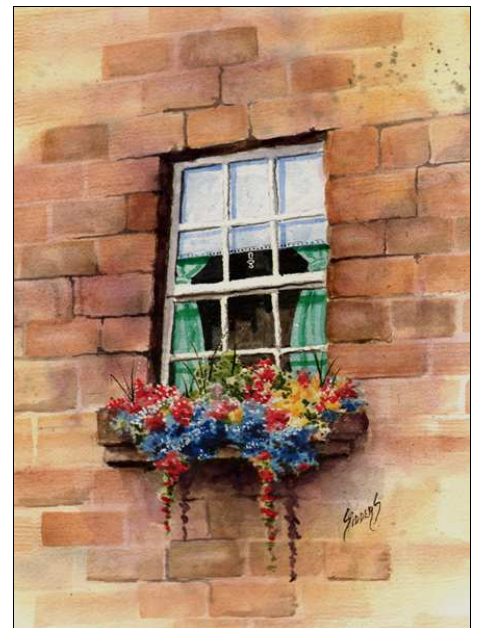
**"Window Niche"**

101024-WC



**"Fence Post"**

110424-WC



**"Window"**



**"Shutters"**

110618-WC



**"Pampa Window"**

111111-WC



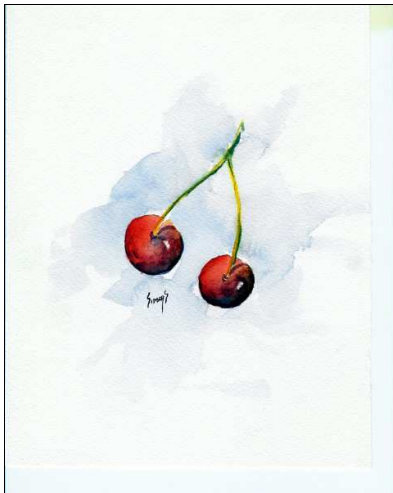
**"2 Daisies"**

080713-WC



**"Cherries"**

150909-WC



**"2 Cherries"**

080710-WC



**"Cherries"**

120509-WC



**"2 Cherries"**

080714-WC



**"3 Cherries"**

080712-WC



**"Simba"**

080225-WC



**"State Fair Caterpillar"**

080124-WC



**"Still Life"**

080801-WC



**"Daisies"**

080310-WC



**"Bingo"**

080709-WC



**"Peach"**

080711-WC



**“Old Bullet Nose”**

070420-WC



**“Old Truck”**

061107-WC



**“39 Chevy”**

060202-WC



**“51 Ford”**

060814-WC



**“Out To Pasture”**

060801-WC



**“Hidden Treasure”**

040912-WC



**"40 Chevy Tudor"**

091021-WC



**"Old 29"**

081025-WC



**"Jerome's Tank Truck"**

080411-WC



**"Been There !"**

060120-WC



**"1934 Dodge Half-Ton"**

100523-WC



**"32 Buick"**

100928-WC



**"1920 Fordson Model F"**

100922-WC



**"Snowman"**

100201-WC



**"39 Ford Truck"**

140203-WC



**"Mail Box"**

110425-WC



**"Johnny Popper"**

060223-WC



**"Harvest Is Over"**

040612-WC



**"Snowbound"**

040610-WC



**"No More Rides"**

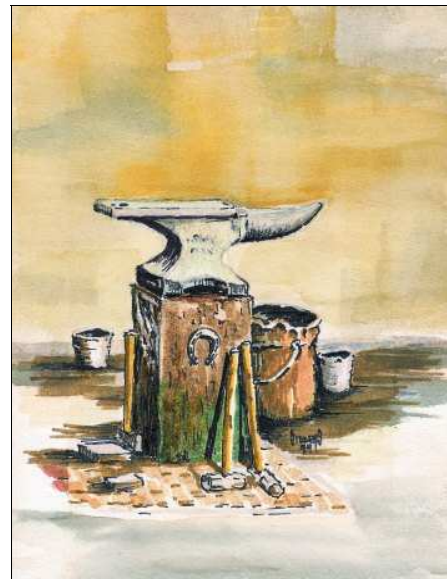
940415-WC



**"Lantern"** 061210-WC



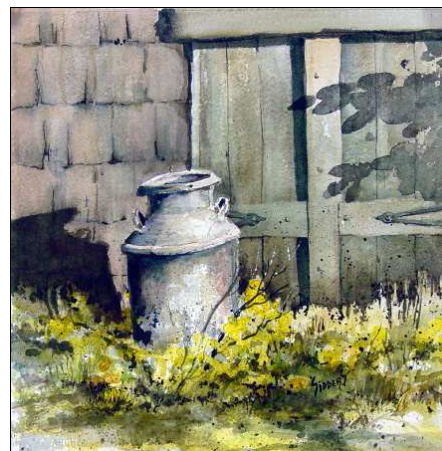
**"Country Door Lock"** 061111-WC



**"Lee's Anvil"** 940108-MM



**"1957 Silver Hawk"** (detail from "Saturday Evening 1964")  
100127-WC(detail)



**"Milk Can"** 040925-WC



**"Turquoise Paint"** 061113-WC

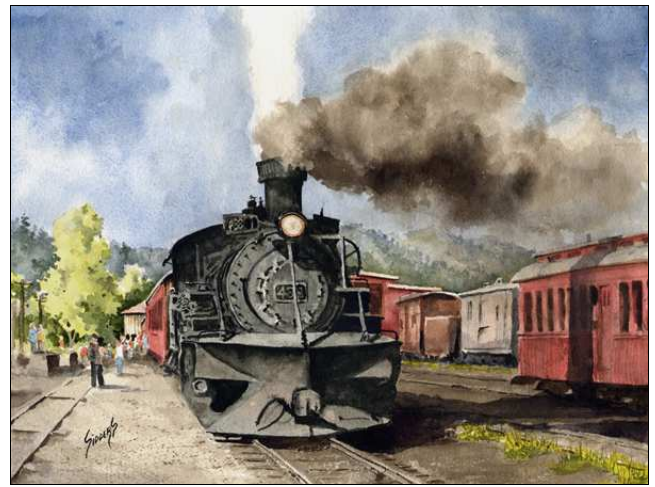


**"Shed Door"** 061106-WC



**"Blackhills Central #7"**

110729-WC



**"Chama Arrival"**

110803-WC



**"481 From Durango"**

110714-WC



**"Double Teamin' to Cumbres Pass"**

110723-WC



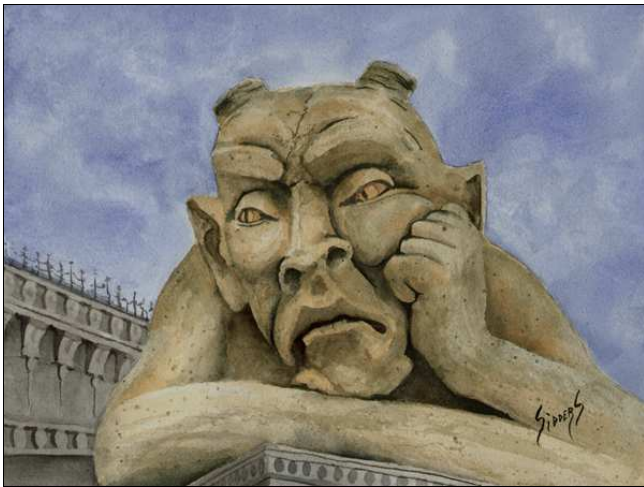
**"413"**

060606-WC



**"Crossing The Gap"**

761111-WC



**"Bored"**

121111-WC



**"Sleepy"**

121206-WC



**"Ulmer Munster Gargoyle"**

121119-WC



**"Door With Roses"**

121023-WC



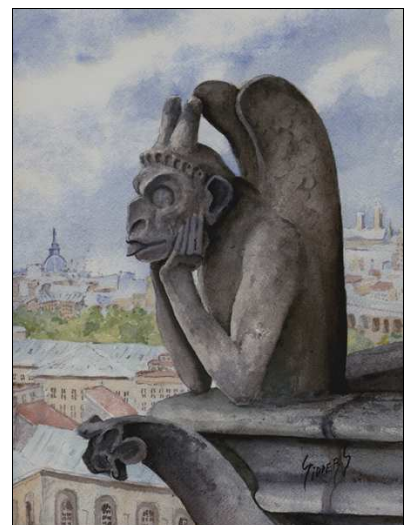
**"The Nervous Sentry"**

121031-WC



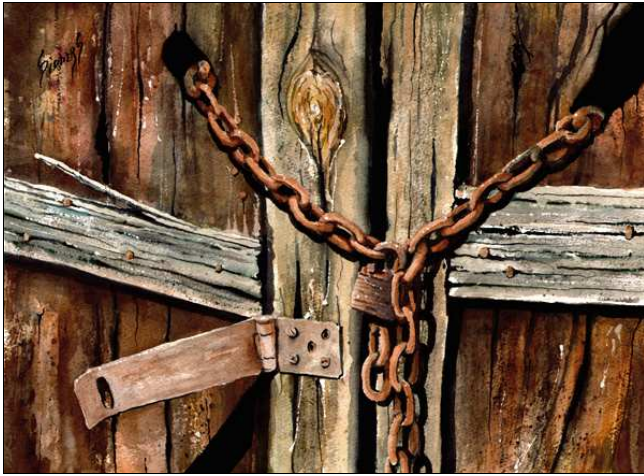
**"The Overseer"**

121106-WC



**"The Same Old Thing"**

121103-WC



**"Locked Doors"**

130308-WC



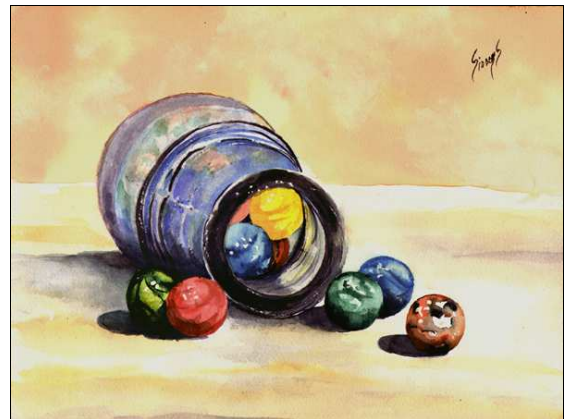
**"Galveston Gull"**

130616-WC



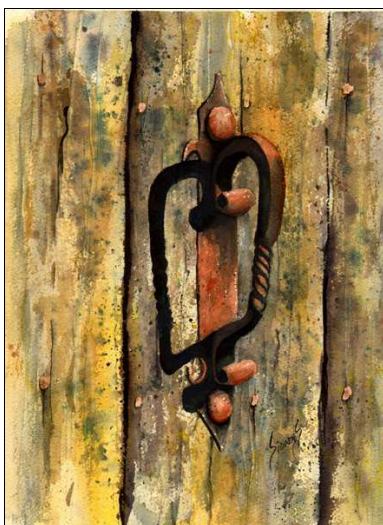
**"Eastern Meadowlark"**

130207-WC



**"Bottle With Marbles"**

130711-WC



**"Wrought Iron Handle"**

130130-WC



**"Wrought Iron Handle"**

130326-WC



**"Lightening"**

130918-WC



**“Pot of Red Flowers”**

140412-WC



**“Red Flowers”**

140423-WC



**“Flowers”**

140818-WC



**“Snowman”**

111120-WC



**“Yellow Wall With Red Flowers”**

140605-WC



**“Wall With Red Flowers”**

140619-WC



**“Daisies”**

140626-WC



**"Stephanie's Pots"**

081001-WC



**"Gulls"**

150313-WC



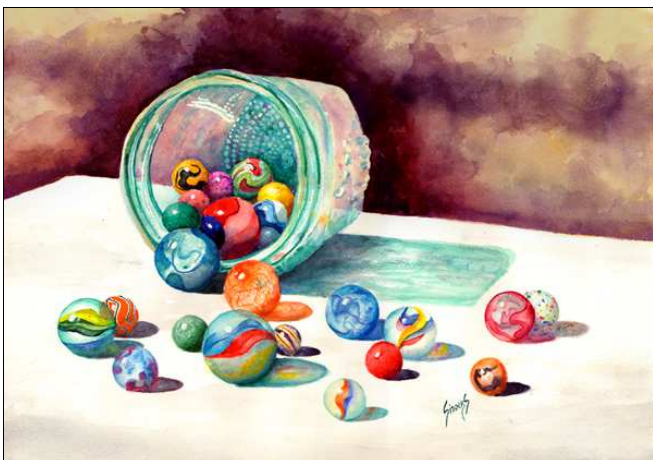
**"Roadrunner"**

150602-WC



**"Brown Pelican"**

150801-WC



**"Marbles"**

150918-WC



**"Blue Orb"**

150910-WC



**"Longhorn"**

160213-WC



**"Bobbi"**

160227-WC



**"Kaleidoscopes"**

130307-WC



**"The Old Man's Hand"**

160411-WC



**"Nymphenburg Swan"**

160415-WC



**"Scissor Tail Flycatcher"**

160421-WC



**“Great Horned Owl”**

160613-WC



**“Golden Eagles in Flight”**

160701-WC



**“Green, Violet Ear Hummingbird”**

160817-WC



**“Yellow-Headed Blackbird”**

160427-WC



**“Nic’s Frog”**

161006-WC



**“Bully”**

161227-WC



**"Busy Birds"**

160829-WC



**"Hummingbird"**

160828-WC



**"Rufous Hummingbird"**

160825-WC



**"Hummingbird"**

160819-WC



**"Ruby Throated Hummingbird"**

160822-WC



**"Old Baldy"**

160803-WC



**"Two Bluebirds"**

170524-WC



**"Snowy Crossing"**

150725-WC

# What is a Giclee Reproduction?

A giclee (zhee-CLAY) is an individually produced, high-resolution, high-fidelity reproduction done on a special large format printer. Giclees are produced from digital images of existing artwork. Also, since many artists now produce only digital art, there is no "original" that can be hung on a wall. Giclees solve that problem, while creating a whole new vibrant medium for art.

Giclees can be printed on any number of media, from canvas to watercolor paper to transparent acetates. Giclees are superior to traditional lithography in several ways. The colors are brighter, last longer, and are so high-resolution that they are virtually continuous tone, rather than tiny dots. The range, or "gamut" of color for giclees is far beyond that of lithography. Lithography uses tiny dots of four colors--cyan, magenta, yellow and black--to fool the eye into seeing various hues and shades. Colors are "created" by printing different size dots of these four colors.

Giclees use inkjet technology, but far more sophisticated than your desktop printer. The process employs a minimum of six colors--light cyan, cyan, light magenta, magenta, yellow and black--of lightfast inks and finer, more numerous, and replaceable printheads resulting in a wider color gamut, and the ability to use various media to print on. The ink is sprayed onto the page, actually mixing the inks on the page to create true colors. They are priced midway between original art and regular limited edition lithographs. Limited edition litho prints are usually produced in editions of 500-1000 or more, but giclees rarely exceed 50-100 reproductions.

Giclees were originally developed as a proofing system for lithograph printing presses, but it became apparent that the presses were having a hard time matching the quality and color of the giclee proofs. They evolved into the new darlings of the art world. They are coveted by collectors, and desired by galleries because they don't have to be produced in huge quantities with their large layout of capital and storage.

In addition, Giclees are produced directly from a digital file, saving generations of detail-robbing negatives and printing plates, as with traditional printing.

# Artist's Statement

Although I have worked with a large variety of art styles and mediums, I have come to prefer working two-dimensionally. The subjects and styles of my work can best be described as "Eclectic". I enjoy so many different approaches to art that, even after 40 years of painting, I sometimes still feel that I have yet to find my direction. The subjects of my more traditional renderings include landscapes, flowers, character studies, old machinery and other items from "everyday-life". I also like to practice my skills in composition by working only with shapes and color. A "whimsical" side to my art occasionally shows itself in a style that I call, "Esoteric Flummery". The themes of this style range from fantasy to surrealistic subjects and situations that can only be found in my mind. The purpose of my artwork, in any form, is not to convey a message, but to produce something that will provoke enough thought or peak enough interest to achieve and hold the viewer's attention for more than a passing glance.



## Sam's Place

### Studio & Gallery

517 S. Locust St. Shattuck, OK

Call (580) 748-1645 to arrange a visit

[www.Samplacestudio.com](http://www.Samplacestudio.com)

(Personal website)

[www.SamSidders.com](http://www.SamSidders.com)

for printable free lessons & other downloads