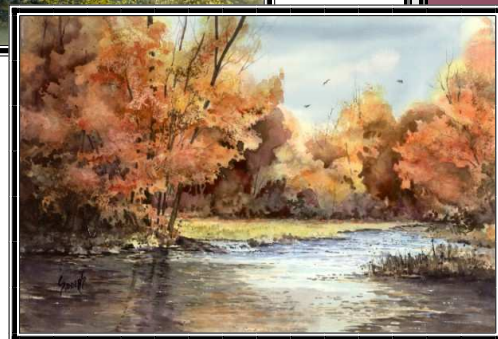
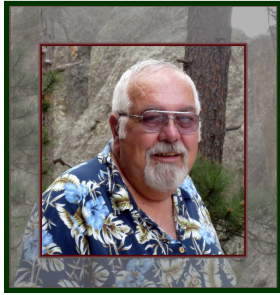


# The Watercolor Paintings of Sam Sidders

## PLACES



Sam Sidders  
54370 S. Co. Rd. 180  
Gage, OK. 73843



## Sam Sidders

Sam's work reflects not only his northwest Oklahoma roots, but also his travels through out the USA and Europe.

While studying art at Southwestern Oklahoma State University he selected three-dimensional art as his area of emphasis, working in sculpture, modeling, ceramics and jewelry design.

However, he has come to prefer working two-dimensionally and prefers the use of Pen and Ink for his drawings and Watercolor for his paintings.

The subjects of Sam's art are very diverse. His three children, who are all fans of different styles of his work, tease him about having multiple personalities when it comes to his art. He enjoys painting and drawing landscapes, doing character studies that are usually composite works rather than being representative of a specific individual. He also produces works that have no subject matter. Working instead with only shapes and color. Sam says that this "non-objective" style is the most difficult yet

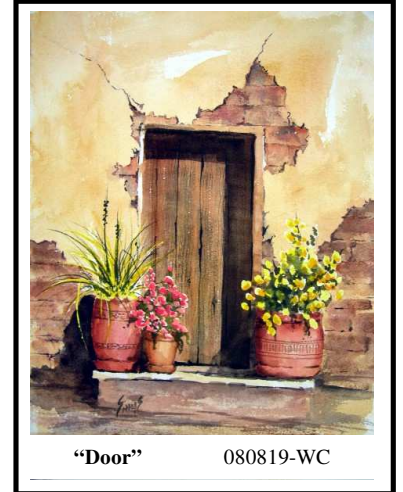
most rewarding style that he works in. Then there is the "whimsical" side of his art that Sam calls, "Esoteric Flummery" with subjects that ranging from fantasy studies of nonexistent times or places to surrealistic objects or situations that can only be found in his mind.

For several years following graduation from college, Sam and his wife Emma owned and operated an art gallery in Oklahoma City. He exhibited his work there and in other area galleries. He also participated

in numerous shows and art festivals throughout the Southwest.

In 1978 Sam left the field of art to assume the management responsibilities of a non-art related family business. However, he continued to paint and draw for his own enjoyment and in 1994, at the encouragement of his children, Sam began to devote more time to art. At that time, he added the making of Kaleidoscopes to his artistic endeavors and has since constructed hundreds of them in a variety of different styles.

In 2002 Sam returned to the field of art as his primary occupation. He no longer makes kaleidoscopes, but dedicates most of his time to watercolor painting. He participated in many art festivals each year until 2010 and his work can be found in galleries and shops in Oklahoma, Kansas, Texas and Arkansas. Over the past 50 years, Sam's work has received many awards.



"Door"

080819-WC



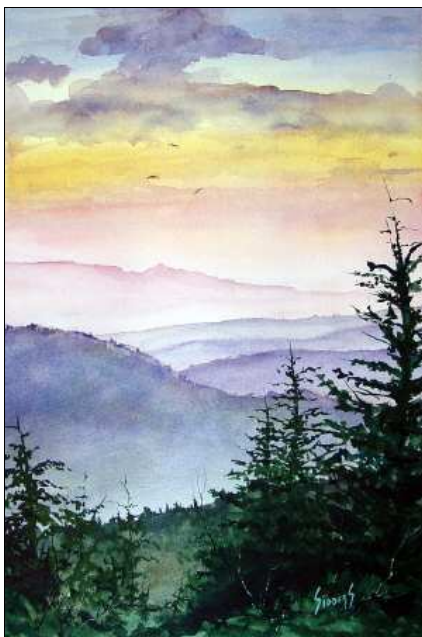
"Old 29"

081025-WC

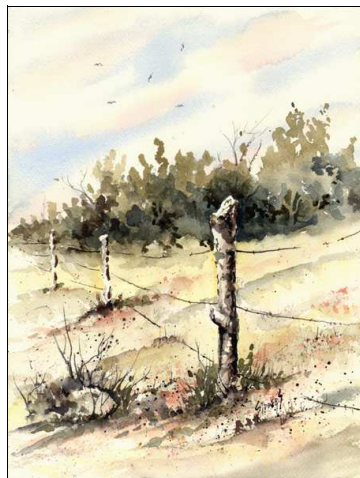


"Untitled #:080520-WC"





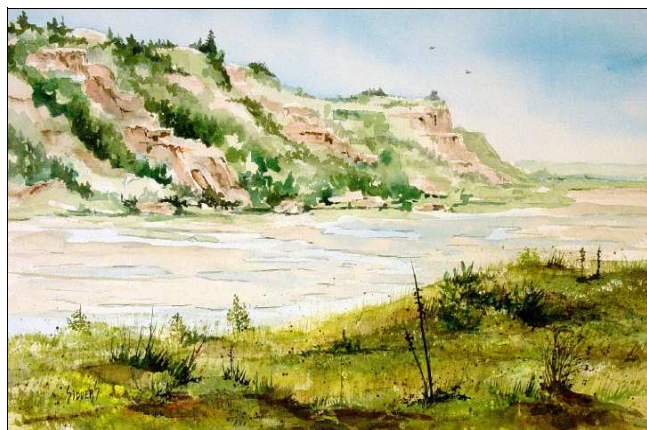
**"Clear Mountain Morning 2"** 040805-WC



**"Fence"** 110519-WC



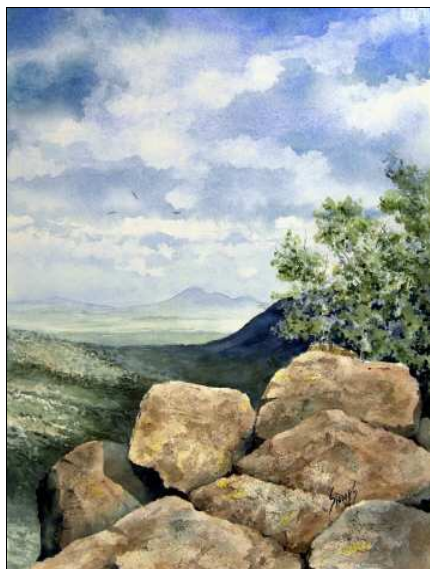
**"School's Out"** 040615-WC



**"Freedom's Cimarron"** 031022-WC



**"Walking With A Friend"** 080708-WC



**"Sierra San Jose Mexico From Montezuma Pass"**  
051231-WC



**"Morning On The Lake"** 040606-WC

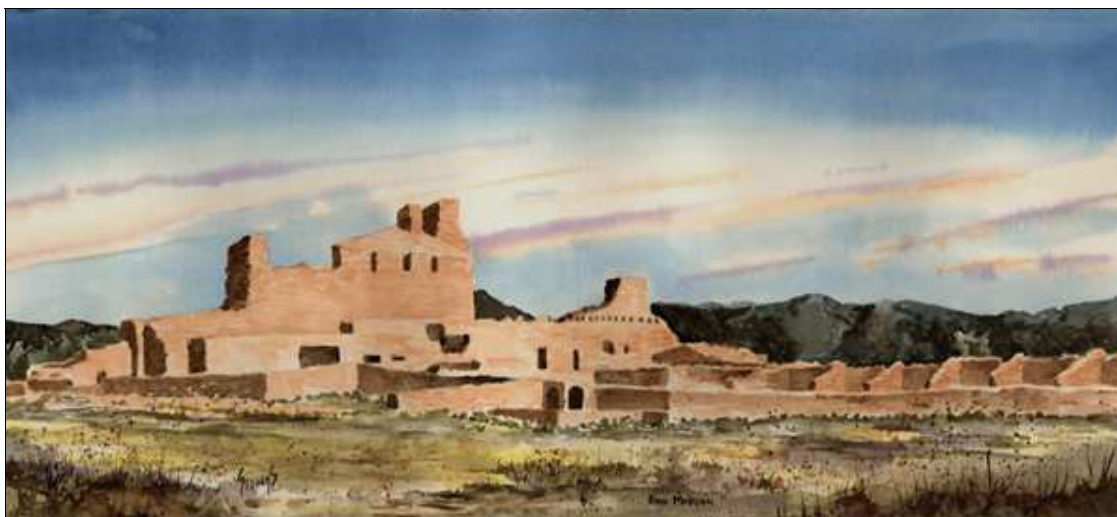




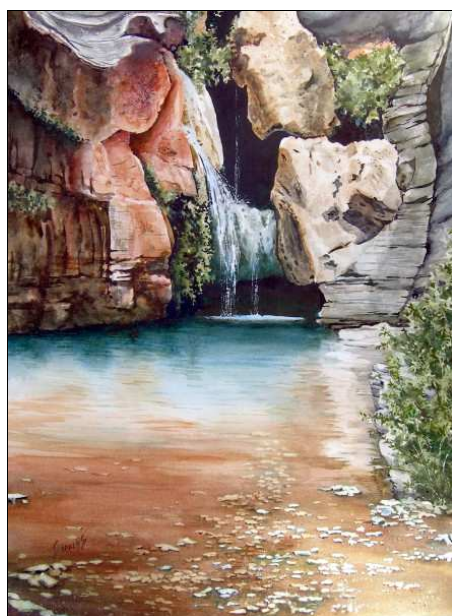
**"Bird Creek"** 031215-WC



**"The Red Roof"** 030908-WC



**"Abo Mission"** 100310-WC



**"Green Falls II"** 081020-WC



**"Downtown"** 081201-WC





**“City Wall”** 050703-WC



**“Rothenburg Memories”**

100428-WC



**“Scenic Overlook”** 041020-WC



**“Misty Morning”**

041105-WC



**“Elizabeth's Gate”** 040623-MM



**“Garden Gate”**

070219-WC





**“Oberammergau Street”** 040525-WC



**“Bavarian Village”** 030921-WC



**“Rothenburg Backstreet”** 040701-WC



**“Katz Castle”** 030923-WC



**“High Castle Courtyard”** 051016-WC



**“Furstenberg On The Rhine”** 040520-WC



**“A German Memory”** 090301-WC





“Untitled”

071120-WC



“Winter Washday”

041005-WC



“The Pottery Shop”

110611-WC



“Arles”

110304-WC



“Ritzenberg Castle”

110502-WC



“At The Tulsa Zoo”

080129-WC



“Evergreen with Snow”

030925-WC





**"Taos Pueblo"** 080126-WC



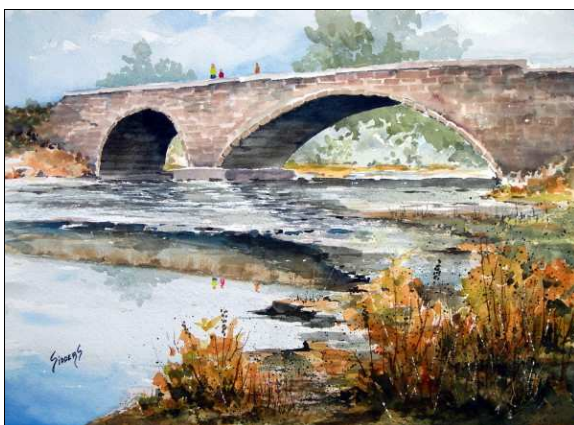
**"1247 Agua Fria Street"** 080326-WC



**"A Little South Of Wolf Creek"** 071026-WC



**"Cheyenne Valley Station"** 080120-WC



**"Double Arch Bridge"** 080129-WC



**"Quarai Mission"** 080201-WC





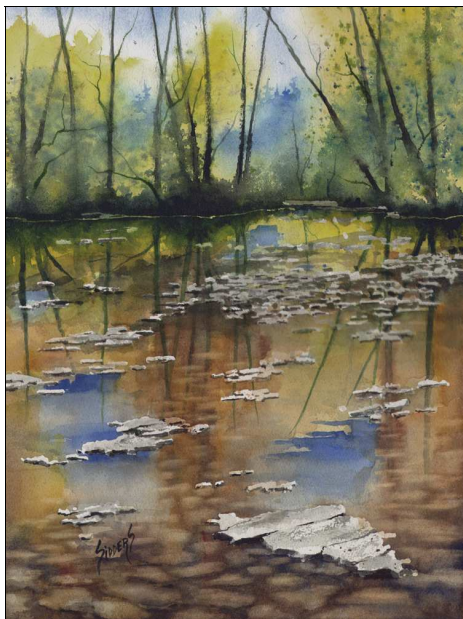
**"Shed With Rail Fence"**

040601-WC



**"The Thompson Place"**

040605-WC



**"Shallow Water"**

120530-WC



**"Eagles Beak Ridge"**

120614-WC



**"On The Beach at St. Simon's"**

050101-WC



**"The Red Ball"**

050124-WC





**“Not Far From Espanola”** 120515-WC



**“Evening Flight Over Palo Duro Canyon”** 051125-WC



**“Spanish Mansion”** 071120-WC



**“After The Rain”** 080512-WC



**“Joe’s Place”** 080218-WC



**“Waiting Out the Squall”** 770415-WC





**"Winter Tree"** 100419-WC



**"Cletus' Tree"** 040910-WC



**"Autumn Woods"** 080909-WC



**"Tree"** 120305-WC



**"Quality Time"** 060211-WC



**"Shelly's Tree"** 081213-WC

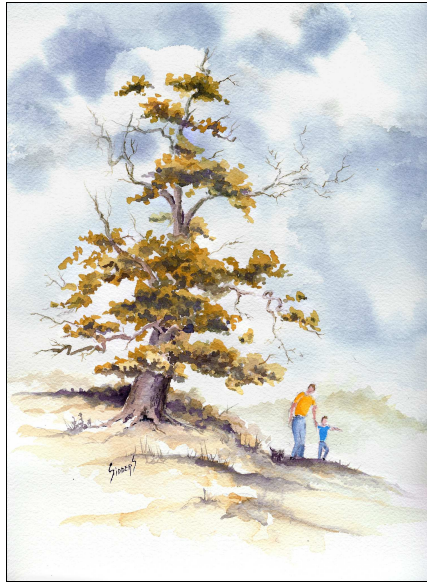


**"Dustie's Tree"** 081214-WC





**"Tree Stump"** 980628-WC



**"Look Dad"** 060215-WC



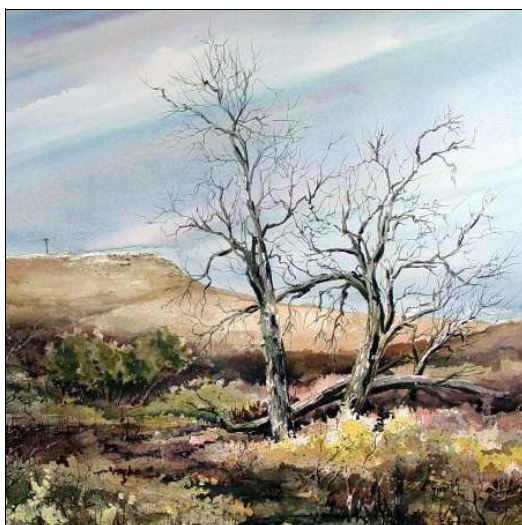
**"Morning"** 041101-WC



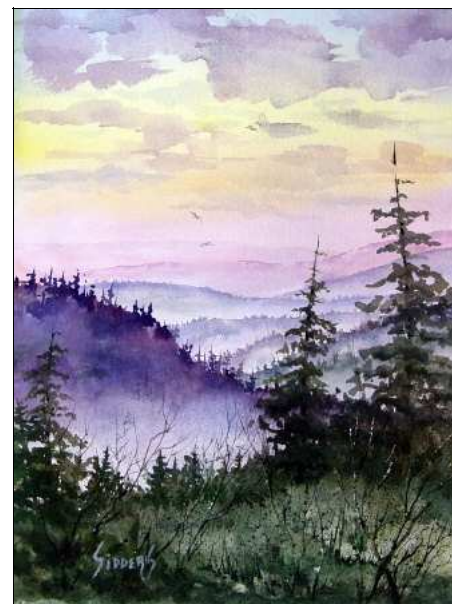
**"Autumn On The Buffalo"** 070201-WC



**"Woodward Cottonwood"** 031024-WC



**"North Of Town"** 050625-WC



**"Clear Mountain Morning"** 040801-WC





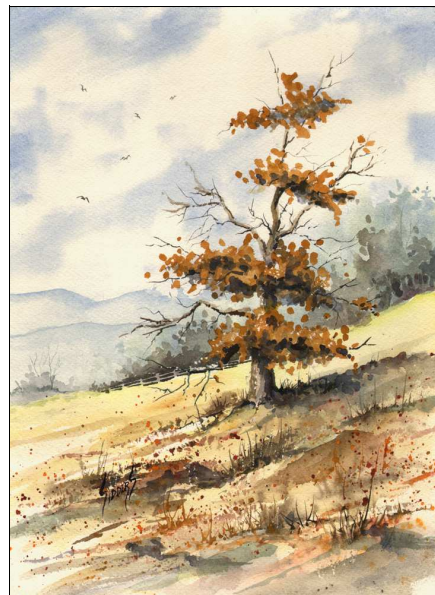
**"Snow"** 090312-WC



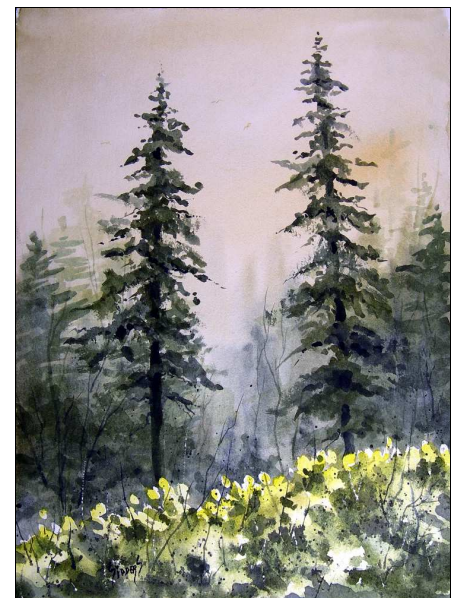
**"Untitled"** 081028-WC



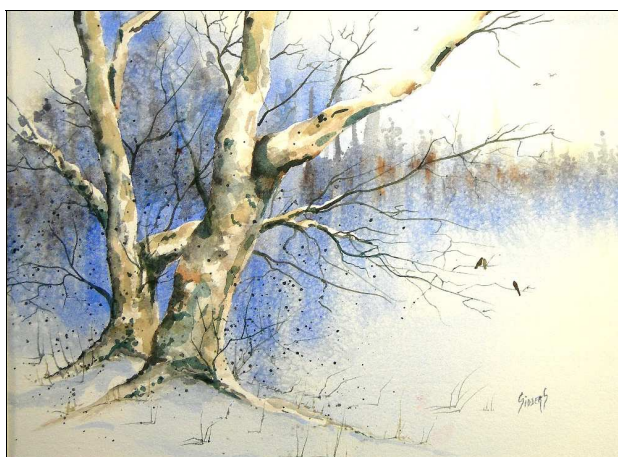
**"Cottonwood"** 030917-WC



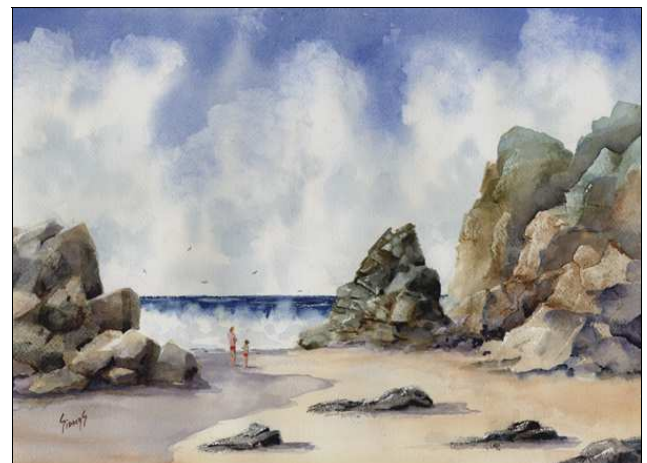
**"Tree"** 120302-WC



**"Trees"** 090216-WC



**"Winter Tree"** 090121-WC



**"Rocky Beach"** 080308-WC





**"The Festival"**

120204-WC



**"Spring St. at Basin Park"**

120903-WC



**"Sunset"**

080305-WC



**"St. Simon's Island Fishing Pier"**

050217-WC



**"A Secret Place"**

060715-WC



**"Red Bird"**

090209-WC





**“George’s House”**

040410-WC



**“Stone Bridge”**

030928-WC



**“A Change Of Occupation”**

031225-WC



**“George’s 2nd. House”**

040415-WC



**“Joe’s Place”**

080915-WC



**“Special Friends”**

040420-WC





**"Autumn Morning"**

07-1114-WC



**"Market Day"**

040425-WC



**"Wilber's Place"**

070404-WC



**"St. Simon's Island Lighthouse"**

050102-WC



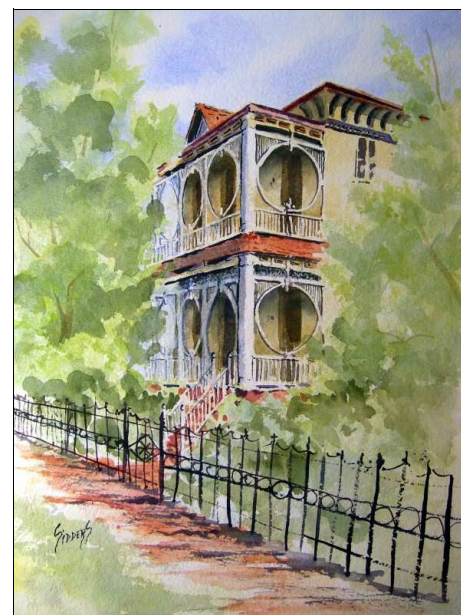
**"Saturday Evening 1964"**

100127-WC



**"Joe's Place"**

080715-WC



**"The House on Spring Street"**

080829-WC

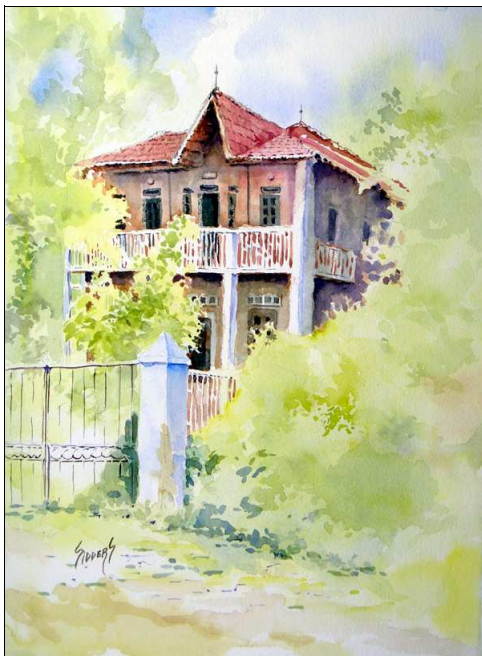




**"Ghost Mound"** 090311-WC



**"Boat House"** 750505-WC



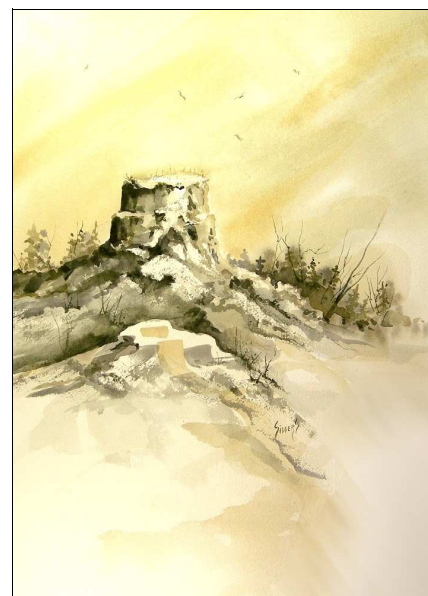
**"The House on Jones Street"** 080414-WC



**"Untitled"** 081106-WC



**"Round Bales"** 031210-WC



**"Ghost Mound"** 090224-WC





**"Camargo Gate"**

040915-WC



**"A Peaceful Walk"**

060630-WC



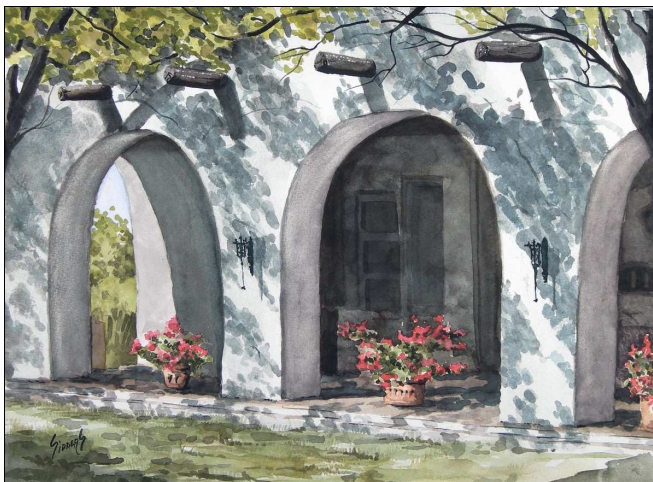
**"The Corridor"**

061205-WC



**"The Corridor II"**

070119-WC



**"Elfrida Back Porch"**

070711-WC



**"Hillside Shed"**

040214-WC





**"Gettin' The Yard Work Done"**

130123-WC



**"Castle In The Mist"**

130122-WC



**"Secluded Castle"**

130114-WC



**"Congregational Church"**

130216-WC



**"Dawn Snow"**

130318-WC



**"Seventh Day Adventist Church"**

130302-WC



**"Winter Tree"**

130411-WC





“Pond”

130404-WC



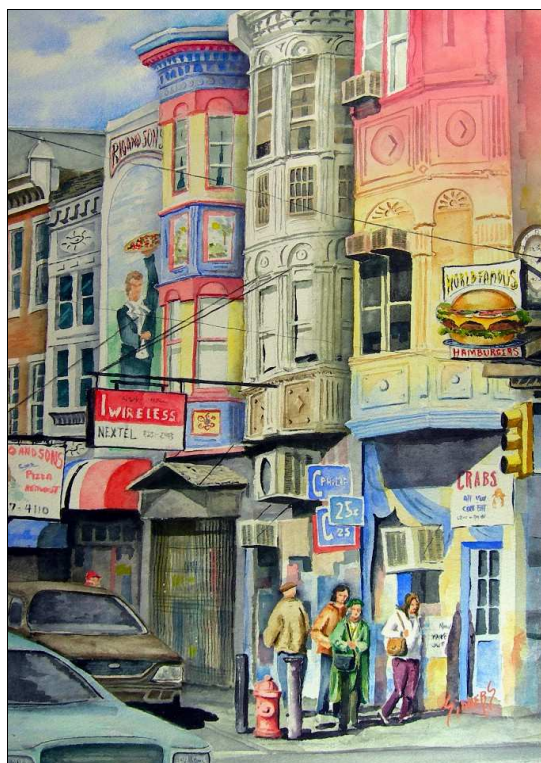
“Canyon”

130515-WC



“Palace Hotel”

120919-WC



“South Street”

090109-WC





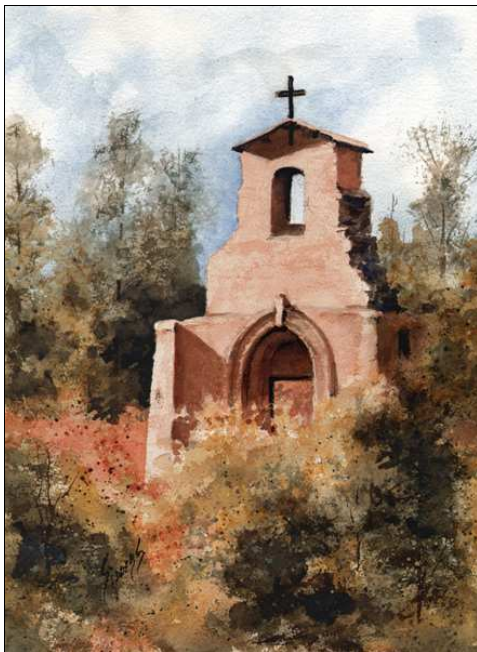
**"Barn"**

140519-WC



**"Barn"**

140617-WC



**"Ruins of Morley Church"**

140731-WC



**"Adobe Wall"**

040920-WC



**"Misty Barn"**

140916-WC



**"Elfrida Courtyard"**

070805-WC





**"Pete and Irene Moved Away"**

080326-WC



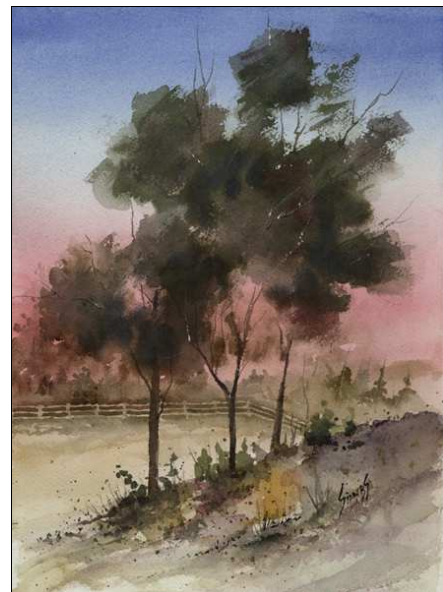
**"Barn"**

051010-WC



**"Flat Top"**

050625a-WC



**"Tree"**

120307-WC



**"Mountain Landscape"**

170531-WC



**"Alone Together"**

170405-WC





**"Flat Top in Winter"**

151124-WC



**"Sunset Flight"**

160312-WC



**"A New Day"**

160315-WC



**"Wilderness II"**

160321-WC



**"Tree"** 160430-WC



**"Wilderness"**

160317-WC





**"Moon Over The Water"**

170606-WC



# What is a Giclee Reproduction?

A giclee (zhee-CLAY) is an individually produced, high-resolution, high-fidelity reproduction done on a special large format printer. Giclees are produced from digital images of existing artwork. Also, since many artists now produce only digital art, there is no "original" that can be hung on a wall. Giclees solve that problem, while creating a whole new vibrant medium for art.

Giclees can be printed on any number of media, from canvas to watercolor paper to transparent acetates. Giclees are superior to traditional lithography in several ways. The colors are brighter, last longer, and are so high-resolution that they are virtually continuous tone, rather than tiny dots. The range, or "gamut" of color for giclees is far beyond that of lithography. Lithography uses tiny dots of four colors--cyan, magenta, yellow and black--to fool the eye into seeing various hues and shades. Colors are "created" by printing different size dots of these four colors.

Giclees use inkjet technology, but far more sophisticated than your desktop printer. The process employs a minimum of six colors--light cyan, cyan, light magenta, magenta, yellow and black--of lightfast inks and finer, more numerous, and replaceable printheads resulting in a wider color gamut, and the ability to use various media to print on. The ink is sprayed onto the page, actually mixing the inks on the page to create true colors. They are priced midway between original art and regular limited edition lithographs. Limited edition litho prints are usually produced in editions of 500-1000 or more, but giclees rarely exceed 50-100 reproductions.

Giclees were originally developed as a proofing system for lithograph printing presses, but it became apparent that the presses were having a hard time matching the quality and color of the giclee proofs. They evolved into the new darlings of the art world. They are coveted by collectors, and desired by galleries because they don't have to be produced in huge quantities with their large layout of capital and storage.

In addition, Giclees are produced directly from a digital file, saving generations of detail-robbing negatives and printing plates, as with traditional printing.

# Artist's Statement

Although I have worked with a large variety of art styles and mediums, I have come to prefer working two-dimensionally. The subjects and styles of my work can best be described as "Eclectic". I enjoy so many different approaches to art that, even after 40 years of painting, I sometimes still feel that I have yet to find my direction. The subjects of my more traditional renderings include landscapes, flowers, character studies, old machinery and other items from "everyday-life". I also like to practice my skills in composition by working only with shapes and color. A "whimsical" side to my art occasionally shows itself in a style that I call, "Esoteric Flummery". The themes of this style range from fantasy to surrealistic subjects and situations that can only be found in my mind. The purpose of my artwork, in any form, is not to convey a message, but to produce something that will provoke enough thought or peak enough interest to achieve and hold the viewer's attention for more than a passing glance.



## Sam's Place

### Studio & Gallery

517 S. Locust St. Shattuck, OK

Call (580) 748-1645 to arrange a visit

[www.Samplacestudio.com](http://www.Samplacestudio.com)

(Personal website)

[www.SamSidders.com](http://www.SamSidders.com)

for printable free lessons & other downloads